

# Installation of the digital Manuals of training produces by GSF

**Groupe Système Forêt**

**Geomatic specialists**

**INSTALLATION PROCEDURE**







# INSTALLATION OF THE DIGITAL MANUALS OF TRAINING PRODUCED BY GSF

1120, Boul. Guillaume-Couture, local 200  
Lévis (Québec)  
Canada G6W 5M6  
Téléphone : 418.903.5488  
Télécopieur : 418.903.5490  
[Info@gsf.ca](mailto:Info@gsf.ca) [www.gsf.ca](http://www.gsf.ca)



## COPYRIGHTS OF THE GSF PRODUCT LICENSE

The **manuals of training** and the **digital data** produced by GSF are protected by the intellectual property law and on the current law on IT development. The use or the distribution of this product or its derivative by-products in third parties, who do not own a license is considerate an illegal act of hacking and fraud. The use of this product in activities of plagiarism is also considered as an illegal activity. Whoever submits himself to one of these acts is liable to legal prosecution.

The acquisition of a licence of the product gives to the purchaser a use licence for a specific user. The licence includes no upgrade neither of the digital document nor the digital data.

The purchase of a product license allows the installation on a single computer. To install the digital document on another computer, expenses of purchase apply.

The links for download of the product are sent by e-mail to the user indicated in the order form. It is the responsibility of the company or the organism that purchase the license to inform Groupe Système Forêt of the user name.

The phone support and the support by electronic mail concerning the use of the presented concepts are not included.

Any reproduction, even partial, by any process whatsoever, of the document or its parts, including digital data, is strictly forbidden.

The document and the digital data cannot be used for purposes of training, of presentation or by any other way to other persons or on the internet.



## TABLE OF CONTENTS

1	SYSTEM REQUIREMENTS AND MINIMUM CONFIGURATION .....	9
2	DATA FOR THE EXERCISES .....	10
3	INSTALLATION OF THE TRAINING MANUAL .....	11
4	REGISTRATION OF GSF TRAINING MANUAL .....	13
4.1	Registration problems on Windows Vista or Windows 7 or Windows 8 .....	14





## 1 SYSTEM REQUIREMENTS AND MINIMUM CONFIGURATION

Digital training manuals produced by Groupe Système Forêt (GSF) are only compatible with the Windows XP, Vista, 7 and Windows 8 operating system in 32 and 64 bits.

**Important:** If you have the Windows XP 64-bit operating system, it is important to mention it during the registration of the license.

Windows operating system
Windows XP 32 and 64 bits
Windows Vista 32 and 64 bits
Windows 7 32 and 64 bits
Windows 8 32 and 64 bits

For Windows XP, the executable may require installing the Dot Net Framework 3.5. The links below provide access to the installation file depending on the Windows language (French or English).

Windows XP in English

[http://www.gsf.ca/distribution/Microsoft/Framework/EN\\_3.5/](http://www.gsf.ca/distribution/Microsoft/Framework/EN_3.5/)

## **2 DATA FOR THE EXERCISES**


The digital documents contain several exercises which use digital data contained in a folder named "Formation" (Training). We suggest copying the folder under the location indicated below:

*C:\Formation*

If the data cannot be directly copied on the hard drive "C", some files can lose their links and be unavailable. The user will have to restore the access path.

### 3 INSTALLATION OF THE TRAINING MANUAL

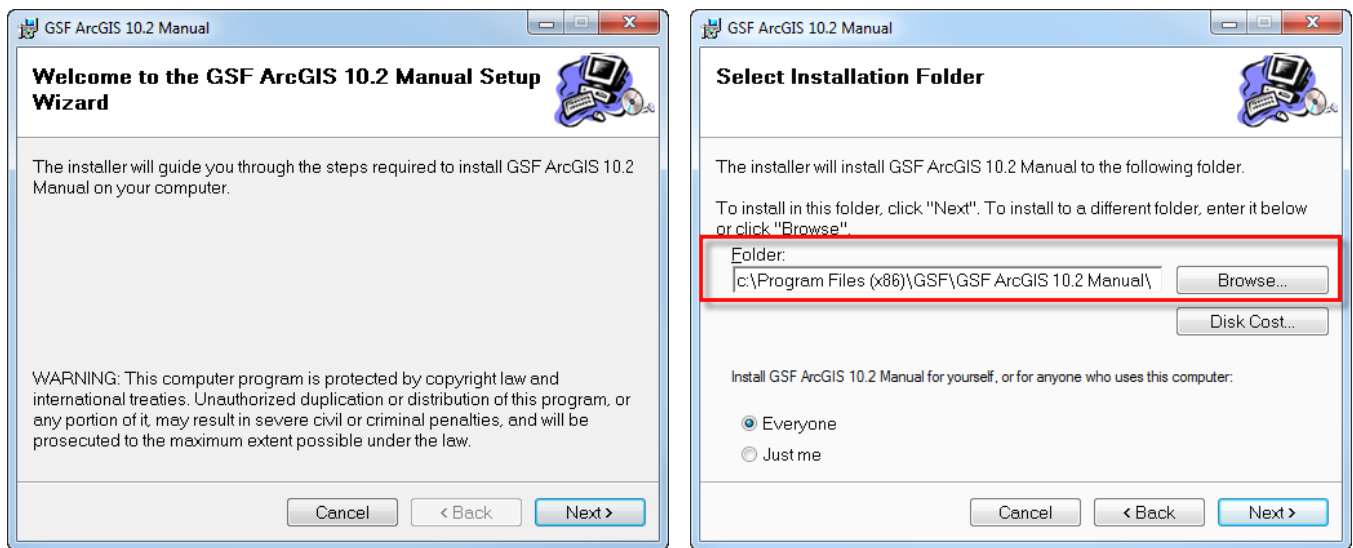
**Important:** Before starting the installation, it is necessary to close all applications and to hold administrator rights to proceed the installation and to the recording of the extension

To start the installation, **double-click** on the file with the MSI  GSF ArcGIS 10.2 Manual Setup.msi extension.

A wizard will guide the user through the installation steps.

By default, the process will install the digital document in the path below. It is possible to modify this access path for another location.

During the recording of the extension (see Section 4, page 13), a text file containing the license will be created in the same place.



The digital manuals of training are accessible from the link below or from the shortcut on the desktop:

***Start, All Programs, GSF***



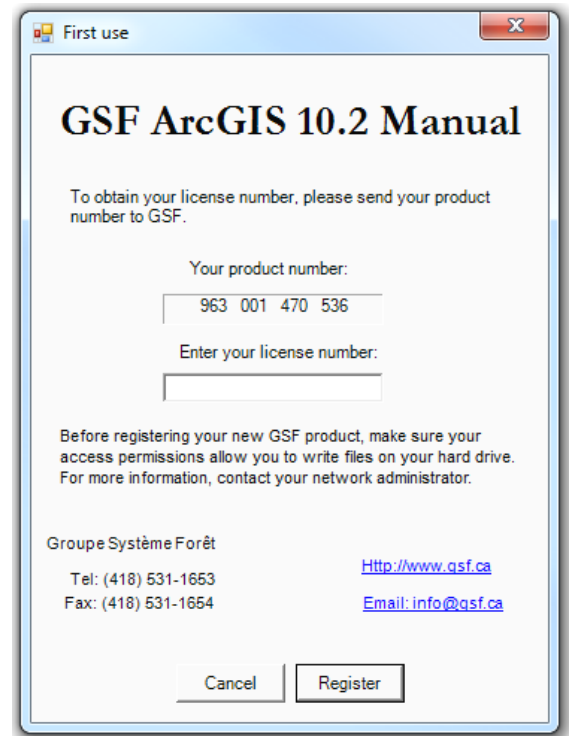
#### 4 REGISTRATION OF GSF TRAINING MANUAL

The **manuals of training of GSF** are protected by a virtual key. Further to the installation of the application, it is necessary to register the document by contacting Groupe Système Forêt (GSF) by email ([info@gsf.ca](mailto:info@gsf.ca) ) or by phone (418) 531-1653.

A **unique product number of 12 digits** will be generated and it is specific to the computer used and of the hardware components. It is necessary to provide this number so GSF could generates the license number consisting of 12 digits.

A **unique product number of 12 digits** will be generated and it is specific to the computer used and of the hardware components. It is necessary to provide this number so GSF could generates the license number consisting of 12 digits.

This number must be registered in the window “**First use**” window.



Registration steps :

- Make sure to have administrator’ rights.
- Launch the installation of the digital manual by executing the MSI file.
- Once the installation is finished, the document can be opened from the **Start, All programs and GSF** menu.
- The windows “First use” contains the number of 12 digits product.
- Contact GSF by e-mail ([info@gsf.ca](mailto:info@gsf.ca)) or by phone (418.531.1653) by giving the 12 digits product number. This number will be used to generate the license number that will be registered in the **License number** section.
- Register the 12 digit license number, with or without space, and then click on **Register**.
- This operation will create a **License.txt** file that will be located at the same place than the extension.

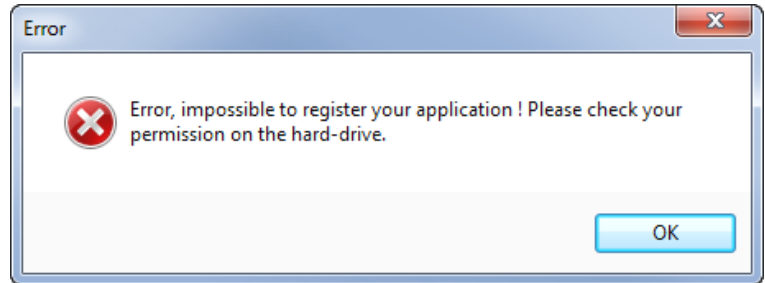
If you have problems with the registration with Windows Vista or Windows 7 or 8, check the next section.

## 4.1 Registration problems on Windows Vista or Windows 7 or Windows 8

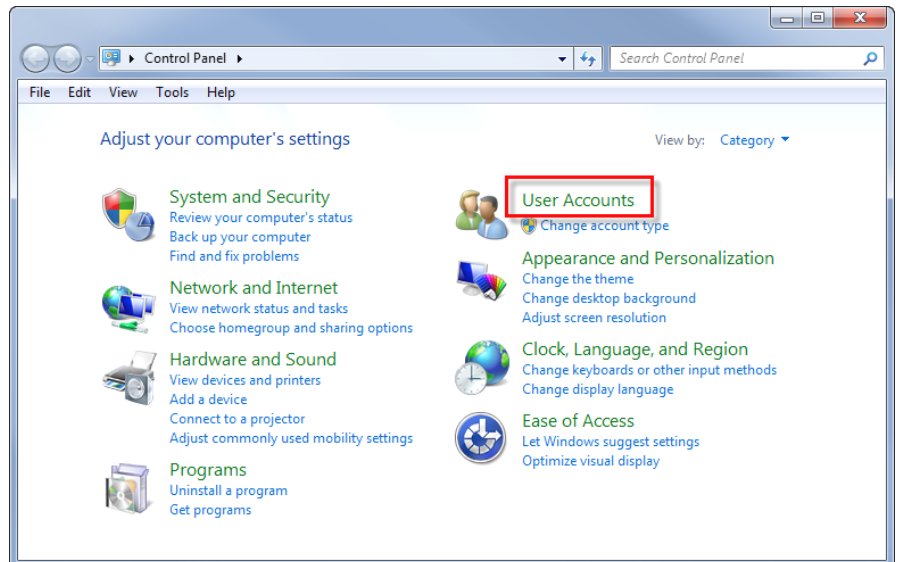
If the following error message appears:

**"Error, impossible to register your application! Please check your permission on the hard drive"**

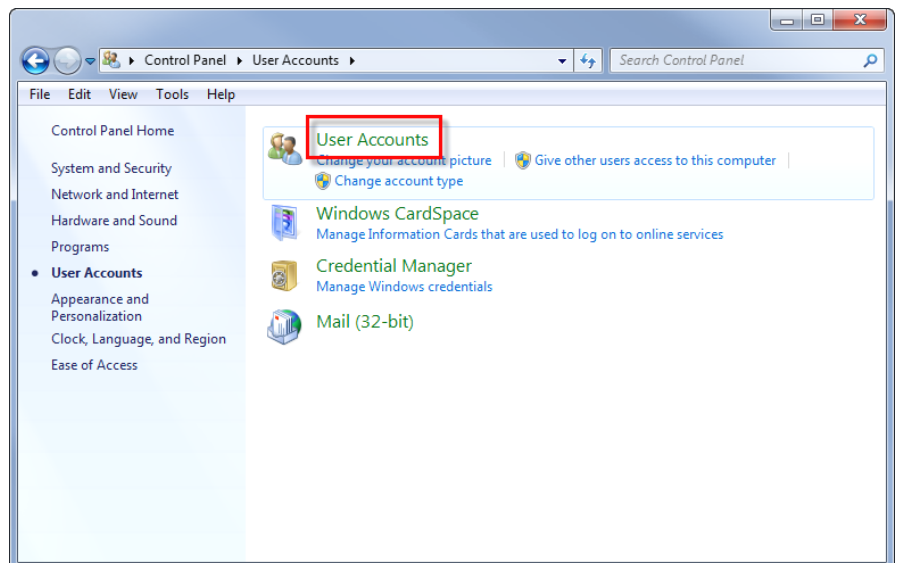
It will be necessary to change the settings of the user control account.



Open the **Control Panel** and select **User Accounts**.

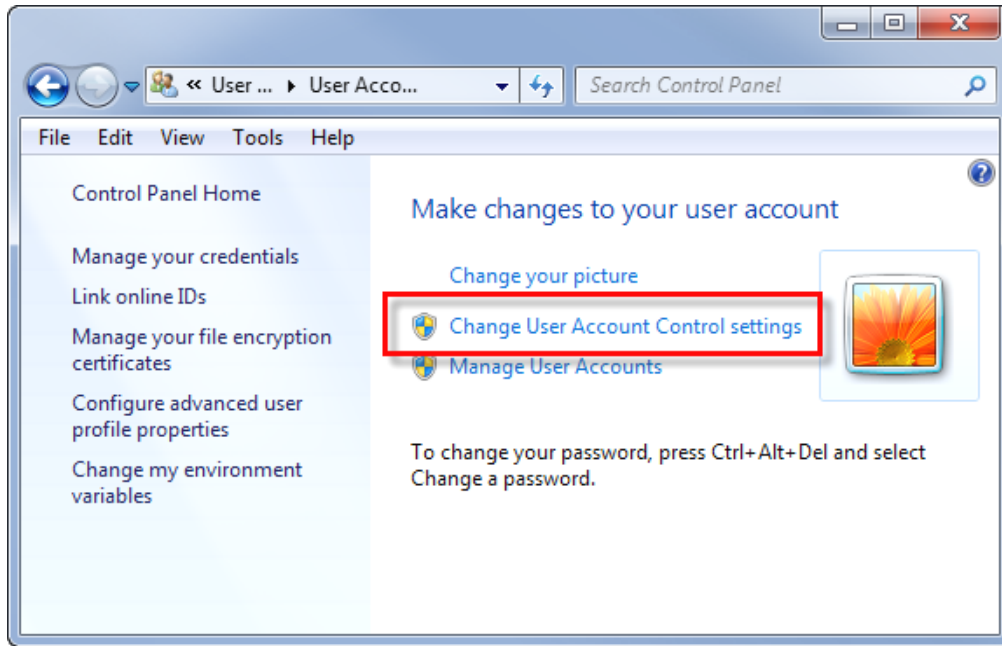


Click again on **User Accounts**.



See next page...

Select the **Change User Account Control Settings** item.



In this window, **scroll the setting bar down until Never notify**. Thereafter, the recording of the GSF extension should work. If you still have problems, please contact us at 418.531.1653 or by email [info@gsf.ca](mailto:info@gsf.ca).

